

Ground Floor



First Floor



OPEN ASPECT TO BOTH FRONT & REAR!. A semi detached property situated within a popular location and BENEFITTING FROM SUPERB VIEWS TO THE REAR. Comprising; porch, hallway, living room, dining room, kitchen, THREE BEDROOMS and fitted shower room. Externally there is a DETACHED GARAGE together with gardens to front and rear. FOR SALE WITH NO ONWARD CHAIN.

8 The Quadrant, Buxton, Derbyshire, SK17 6AW
T. 01298 23038 | | www.wrightmarshall.co.uk

Buxton | Chester | Crewe | Knutsford | Nantwich | Northwich | Tarporley

MISREPRESENTATION ACT 1967.

Messrs Wright Marshall for themselves and for the vendors or Lessors of this property, whose agents they are, give notice that:

1. The particulars are set out as general outline only for the guidance of intending purchasers, and do not constitute, nor constitute part of, an offer or contract.
2. All descriptions and references to condition and necessary permissions for use and occupation, and other details are given in good faith and are believed to be correct but any intending purchasers or tenants should not rely on them as statements or representations of fact but must satisfy themselves by inspection or otherwise as to the correctness of each of them.
3. No person in the employment of Messrs. Wright Marshall has any authority to make any representation whatever in relation to this property.

OPEN ASPECT TO BOTH FRONT & REAR!. A semi detached property situated within a popular location and BENEFITTING FROM SUPERB VIEWS TO THE REAR. Comprising; porch, hallway, living room, dining room, kitchen, THREE BEDROOMS and fitted shower room. Externally there is a DETACHED GARAGE together with gardens to front and rear. FOR SALE WITH NO ONWARD CHAIN.

ENTRANCE PORCH

Double glazed entrance door, double glazed window.

ENTRANCE HALLWAY

10'7 x 8'6 (3.23m x 2.59m)

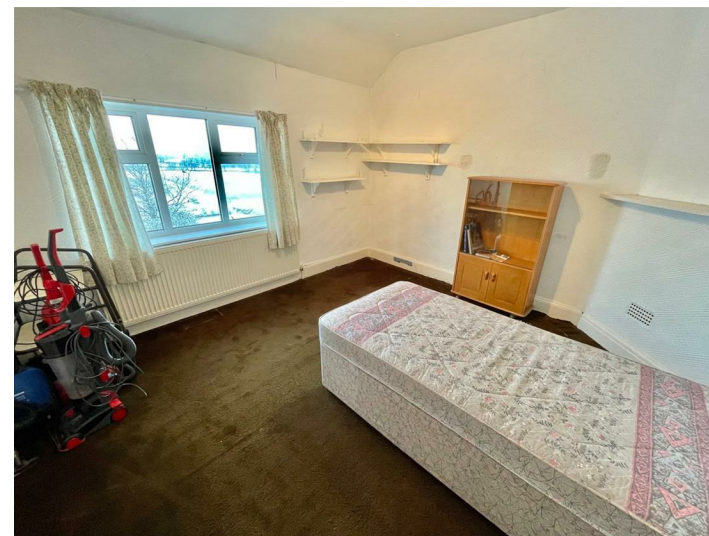
Glazed window, double glazed door, stairs to first floor, radiator, picture rail.



KITCHEN

11'8 x 6'3 (3.56m x 1.91m)

Fitted with wall and base mounted units with work surfaces over and tiled splash backs, double drainer sink unit, space for washing machine, space for fridge/freezer and electric cooker, door to pantry with shelving, frosted double glazed door, double glazed window.



BEDROOM TWO

12'4 x 11'8 (3.76m x 3.56m)

Double glazed window with views, radiator.

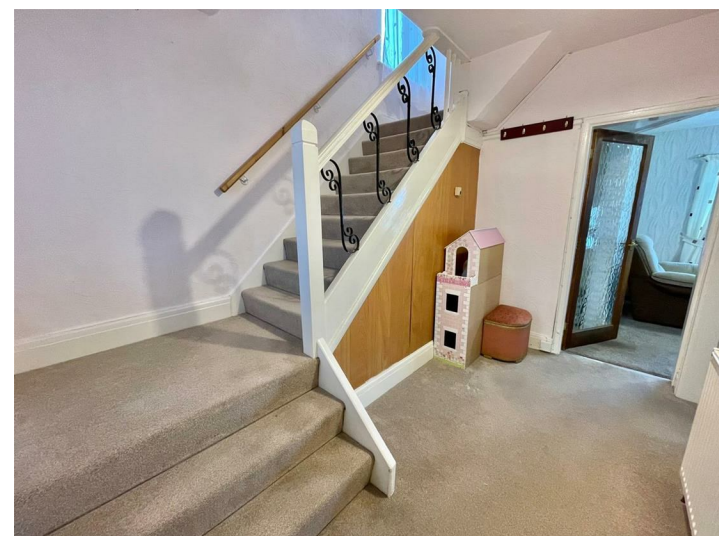
hand basin with drawers beneath, airing cupboard with hot water cylinder, radiator.



EXTERNALLY

To the front of the house there is a gated driveway with open aspect to the front and access to the side of the house towards the garage.

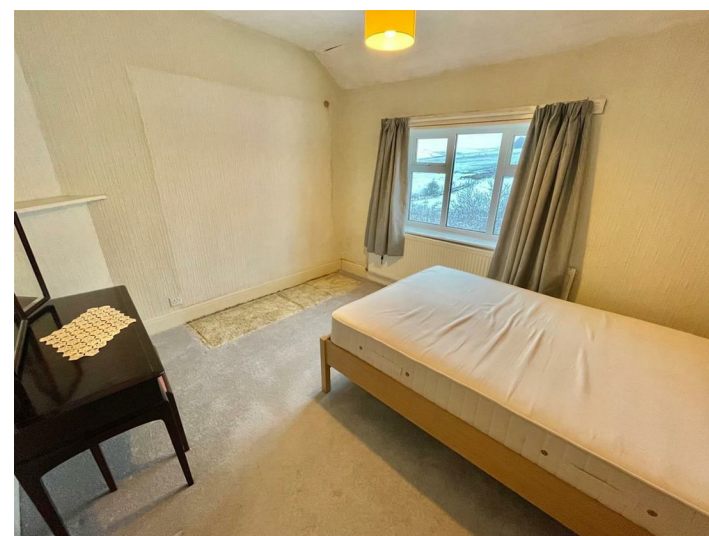
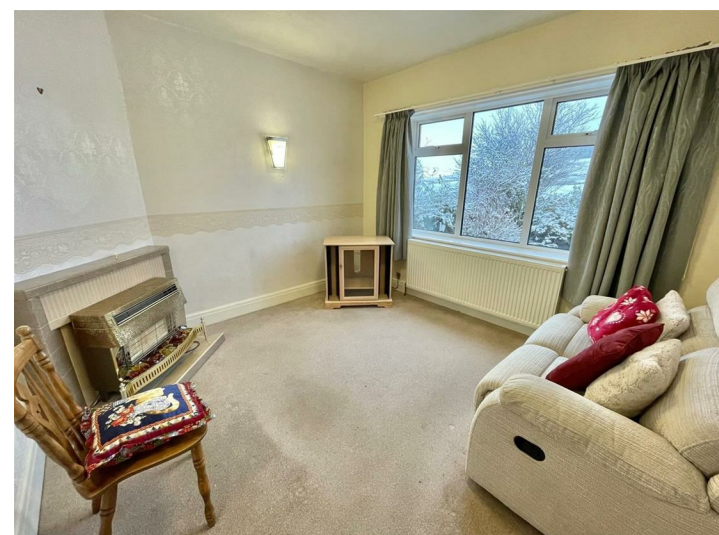
The rear of the property offers a good sized garden, laid to lawn with enclosed boundaries and superb open views.



LIVING ROOM

11'7 x 10'7 (3.53m x 3.23m)

Double glazed window, radiator, tiled fireplace with gas fire, two wall light points.



BEDROOM THREE

10'2 x 7'9 (3.10m x 2.36m)

Double glazed window, picture rail, radiator.

FIRST FLOOR LANDING

Frosted double glazed window, access to roof void.

BEDROOM ONE

12'3 x 10'8 (3.73m x 3.25m)

Double glazed window, radiator.

DINING ROOM

13'7 x 11'9 (4.14m x 3.58m)

Double glazed window with views, radiator, wooden fire surround with inset electric fire.



SHOWER ROOM

Double shower cubicle with shower fittings over, vanity wash

DETACHED GARAGE

Up and over door, glazed window to side.